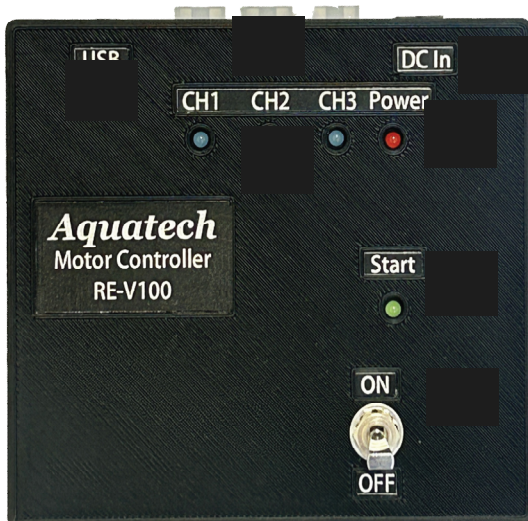


## Specifications of new motor controller RE-V100 for Valve RV-001 series

<b>Product name</b>	DC motor controller for Aquatech valves
<b>Model number</b>	RE-V100
<b>Applicable valves</b>	RV-001 series
<b>Drive voltage</b>	DC 3.0 V
<b>Input voltage</b>	DC 5V 1A (AC-DC adaptor : AC100 - 240V 50/59Hz ; bundled)
<b>Dimensions</b>	100 x 93x 49 mm



USB connection terminal (USB A-micro B ; bundled)

Valve connection terminals (Ch. ① - ③)

DC-In connection terminal (AC-DC adaptor ; bundled)

Valve Indicator - Ch.① - ③ (LED turns blue when open.)

Power - LED (Red)

Start Indicator - LED (Green)

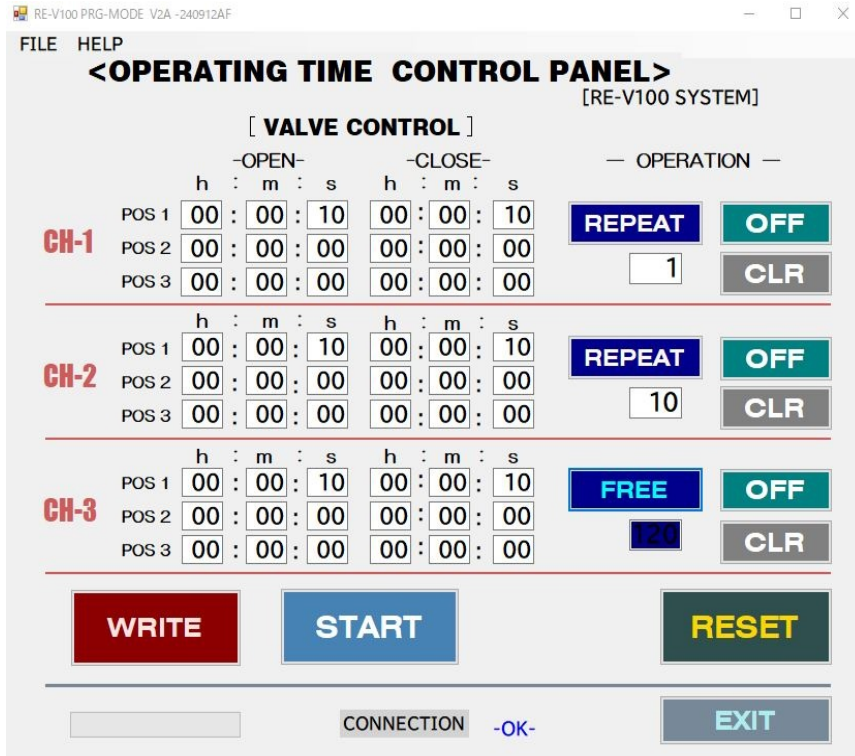
Start switch - On/Off

**Accessories**

- Type A - micro B USB cable
- USB memory (PC software)
- AC-DC adaptor

# PROGRAM

Max 3 programs can be set on each settings.



## <PROGRAM Settings>

- |                 |  |
|-----------------|--|
| Valve CH. 1 - 3 | Setting of POS 1 - 3 for each channel is<br>POS 1 - 3 for each channel can be set.   |
| Open time       | Set open (OPEN) time<br>* Setting range between 00h 00m 01s to 99h 59m 59s   |
| Close time      | Set close (CLOSE) time<br>* Setting range between 00h 00m 01s to 99h 59m 59s   |
| REPEAT          | Input number of repeat operation for specified program table (POS 1 to POS 3).<br>Initial setting is "1". You can input value between 1 to 99.   |
| FREE            | Click and select "FREE" to repeat the action indefinitely.   |
| CLR             | Clear command for each channel.  |
| ON/OFF          | On/Off command for operation of each channel. On (Red), OFF (Green)  |
| RESET           | RESET all settings of program in POS 1 to POS 3.   |
| WRITE           | Click WRITE to input the PROGRAM settings to controller's ROM memory.<br>*When click WRITE, be sure that the start switch is at OFF position.<br>*During WRITE, it will be in WAIT mode and the progress bar is indicated. |
| START           | START / STOP button while connected to the PC (computer) with USB.<br>*Operation is also possible by Start switch of RE-V99 without connection with PC.  |
| SAVE/OPEN       | Program contents can be saved. (Type in file name.)<br>[OPEN] Recall a saved program.<br>Once you have called up the program, click the "WRITE" key to write the program to the main unit.                                 |
| EXIT            | Disconnect from PC (computer).   |
| HELP            | Calling up the manual.   |